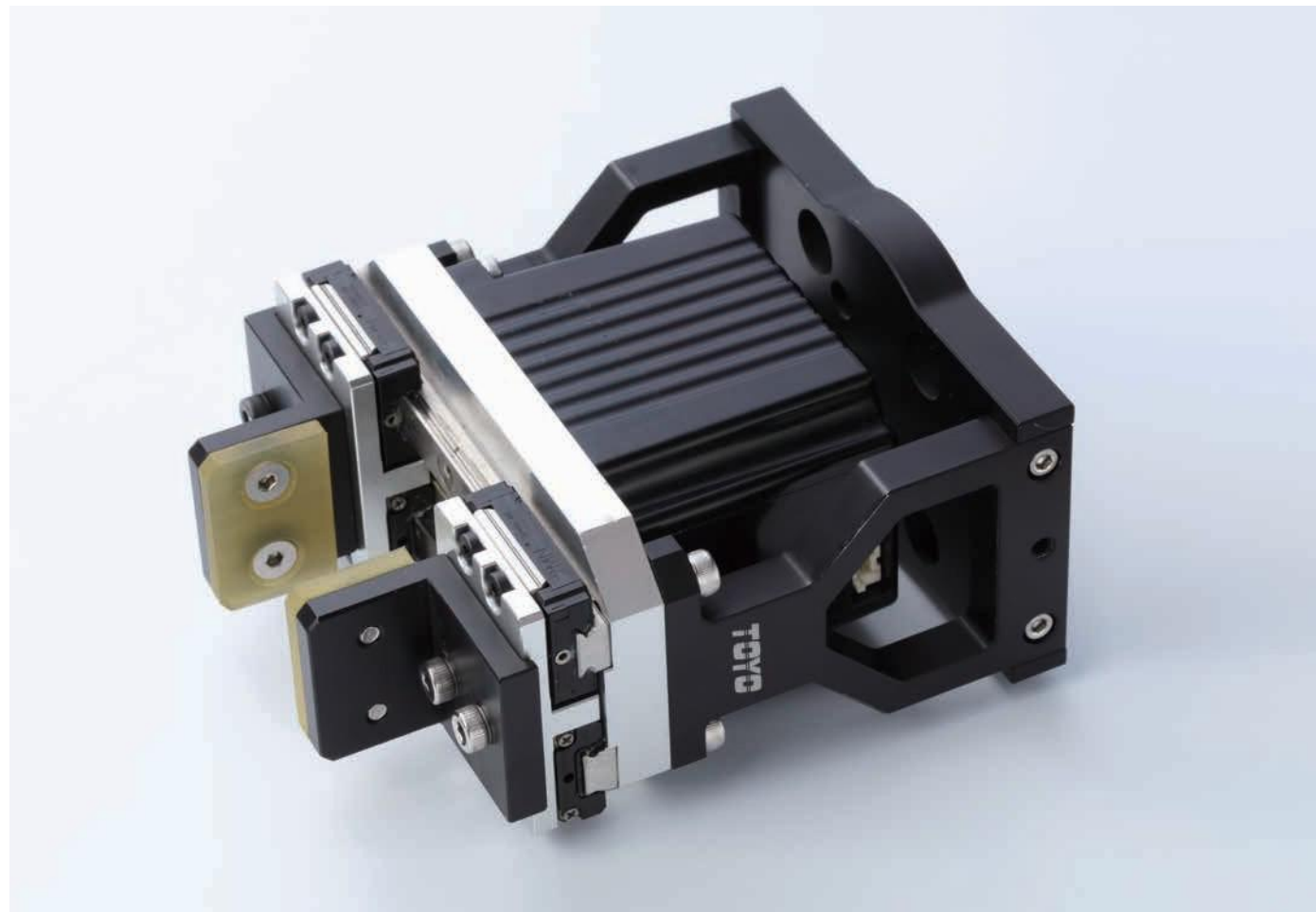


CHG2



凸輪式電動夾爪 Cam Structure Drive

免費技術專線：大陸 400-875-0009 台灣 0800-800-893
Toll-Free Number: China 400-875-0009 Taiwan 0800-800-893



馬達尺寸 $\phi 42\text{MM}$

型號表示方式 Ordering Method

CHG2 - S30 - 002 - 0001

本體型號
Model

特注式樣
Customization Order No.

開閉行程
Open/Close Stroke
30 30mm

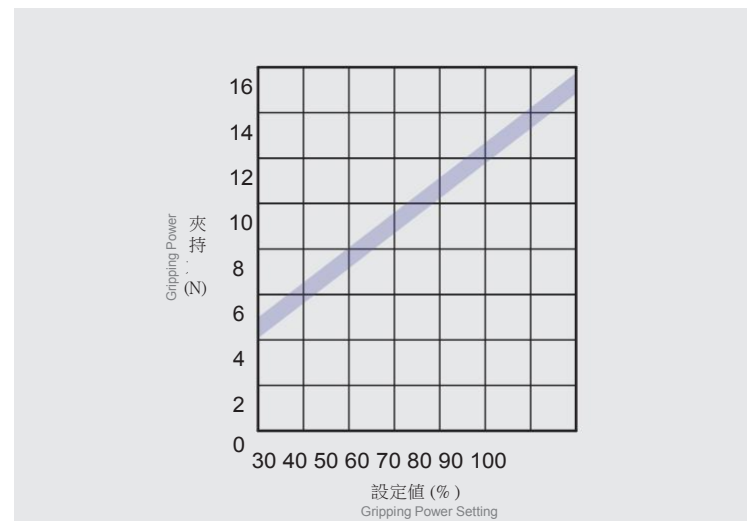
電纜線長
Cable Length
002 0.2m

基本仕様 Specification

規格 Spec	夾持重量 Weight (kg)	0.15
	夾持力範圍 Gripping force (N)	4.5~15 (30-100%)
	開閉行程 Open and close stroke (mm)※1	30
	最高速度 Maximum speed (mm/s)	30~150
	位置重複精度 Position repeatability (mm)	±0.05
部品 Parts	導引機構 Guide structure	線性滑軌 Linear guide
	使用溫度範圍 Operating temperature range (°C)	0~50℃
	使用濕度範圍 Operating humidity range (%)	RH90 Below RH90
馬達尺寸 Motor Dimension (mm)	重量 Weight (g)※2	450

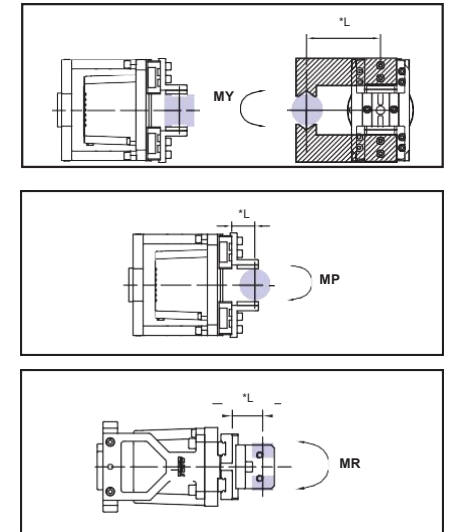
※1 雙邊合計行程。Total stroke of both sides.

※2 重量包含本體與馬達。Weight of model with motor.



*夾持力誤差: ±15% +/-15% clamping force tolerance.

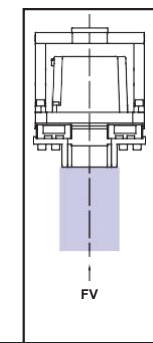
容許夾持負載力矩表 Allowable Moment



*L: 夾爪至負荷作用點之距離(mm)
Distance to the loading location

偏力矩 Allowable yawing moment	最大容許力矩 Maximum moment	(單位 Unit: N.m)
MY	7.4	
俯仰力矩 Pitching moment	MP	7.4
滾動力矩 Rolling moment	MR	11.8

*表中負荷及力矩的值表示靜的
The value in the chart is static, not dynamic loading and torque.



垂直方向容許靜負荷 FV
Vertical Maximum Force

500

特色說明 DM Series DGT Series DGT Series DGT Series CGTH Series CGTH Series CGTH Series CH Series

CHG2

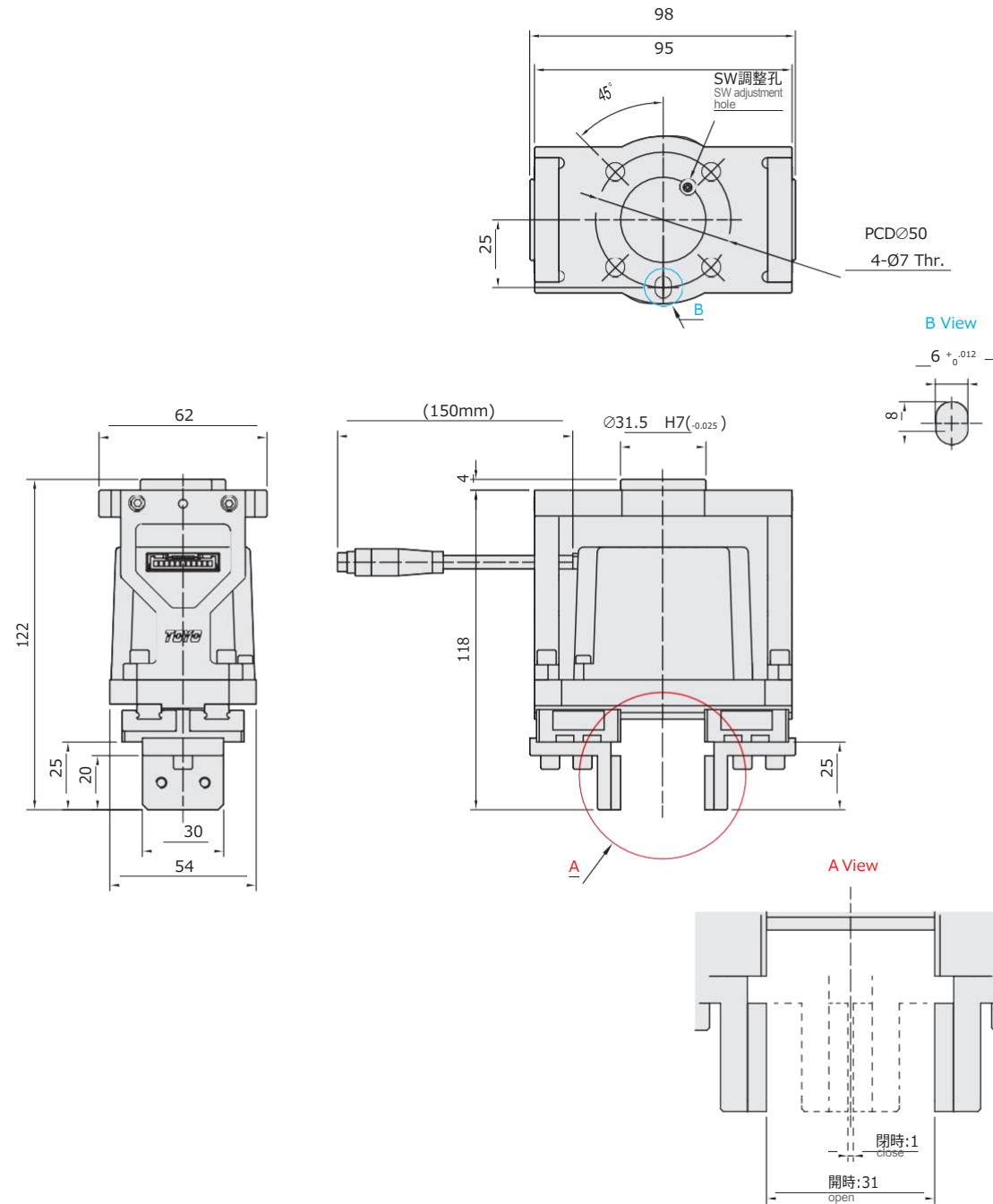


凸輪式電動夾爪 Cam Structure Drive

免費技術專線：大陸 400-875-0009 台灣 0800-800-893
Toll-Free Number: 400-875-0009 0800-800-893

S30 標準型 Standard Type
2D CAD 3D CAD
CAD圖面可至www.toyorobot.com下載
Please download the CAD file from TOYO's website: www.toyorobot.com

(單位 Unit : mm)



Memo